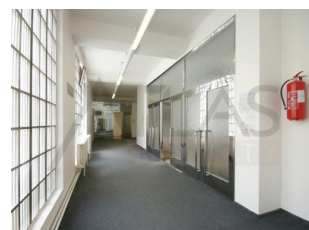


Office for rent 27 sqm, Opletalova street, Praha 1

**Registration
number:
NB0468**



This offer is not longer available

Area non residential	27m ²
Floor	3 rd floor
Structure of building	Mixed
Elevator	Yes
Status of estate	Very good
Number of rooms	1

Type of ownership	LTD.
Parking	Public parking
Availability	immediate
Area use	0m ²
Parking	Public parking

Rent of single office on the 3rd floor (lift) of office building. Quiet office, phone lines, internet. can be furnished. Reception and 24/7 security in the building. Rent 9.342 CZK, services 1.495 CZK (+ 400 CZK/person) . Near Václavské náměstí, excellent public transport) metro A,B,C. trams 3,9,14,24. For more details and property viewing please feel free to contact English speaking agent Jan (+420) 775 609 626. Available immediately

Contact agent



Jan Kuklík

mobile: +420 775 609 626
tel.: 775 609 626
email: jan@atlas-reality.cz